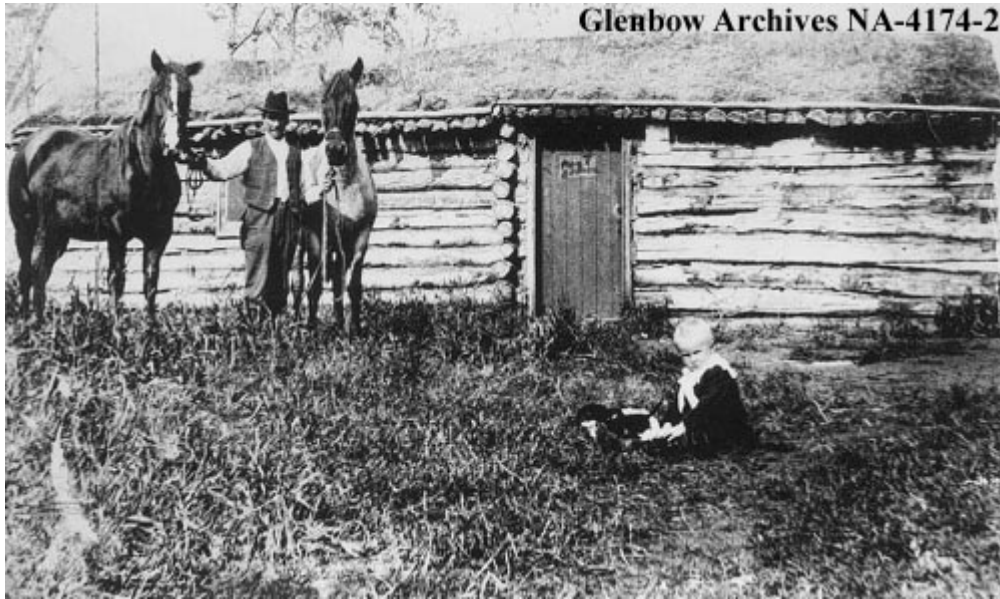


Early Days to 1920



1895 Carl Blomquist, postmaster, with son, Jack outside the first post office for Calmar. Located one half mile south of Calmar.



Early 1900s Mrs. Floden spinning, Calmar district, Al-



Glenbow Archives NA-4174-9

Early 1900s Creek crossing near Rosehill school, Calmar area, Alberta. Three ladies standing on tree trunk used as crossing. Rosehill was the first school built in the Calmar area.



Glenbow Archives NA-4174-13

1904 Andrew Dickson ploughing on his new home-
stead, Calmar district, Alberta. Andrew Dickson handles the plough while his son, Oscar, drives the three



Early 1900s Threshing crew beside steam engine, Calmar, Alberta. G. I. Ferris, 6th from left. Andrew Anderson in front of smokestack.



Early 1900s. A group picnic. This photograph, in mural form, is situated on the north side of the pump station in Woodland Park.



1908 Andrew Westlund family in front of home, Calmar, Alberta. L-R: Mrs. Sarah Westlund; Matilda; Andrew; Elvira; Albert.



1912-13 Willow Creek School, Calmar area, Alberta. Teacher, Daisy Cornell, foreground.



1913 Group singing hymns, Calmar, Alberta. L-R: Elvina Westlund; Fred Fladen; Louis Engberg (with violin); Selma Westlund (with guitar); Tillie Westlund; Alex Peterson. Adolf Engberg, front.



1912-1915 Group playing cards in Matt Olson's home, Calmar district, Alberta. L-R: Andrew Dickson; Matt Olson; ---? Wickstrom; Signe Olson; Lottie Erickson; Fred Erickson. Liquor bottle held by Fred Erickson.